

POMERANIAN
SPECIAL
ECONOMIC ZONE



**biala
podlaska**
otwarta brama Europy



BIALA PODLASKA SUBZONE



www.strefa.gda.pl

invest@strefa.gda.pl

www.invest.bialapodlaska.pl

invest@bialapodlaska.pl

PUBLIC AID IN THE POMERANIAN SPECIAL ECONOMIC ZONE



THE POMERANIAN SEZ OFFERS

- Income tax exemptions (PIT or CIT) from 25% up to 70% of the eligible cost of investment or two-year cost of the newly hired personnel
- Industrial areas – locations close to the main communication routes, ports and airports
- Comprehensive support throughout each investment project
- Post-project patronage to support entrepreneurs after their investments are up and running
- Professional education – apart from university graduates, employees with industry-specific experience



WHO CAN OBTAIN A PERMIT TO OPERATE IN THE ZONE?

Permits for conducting business in a special economic zone are granted mostly for manufacturing activities.

It is also possible to run service activities including:

- services dealing with software and advising in the sphere of IT and other linked services,
- services of processing data, hosting and website administration, Internet portal services,
- financial auditing services,
- accounting services,
- services in the field of scientific research, technical analysis and developmental works,
- call-centre services.



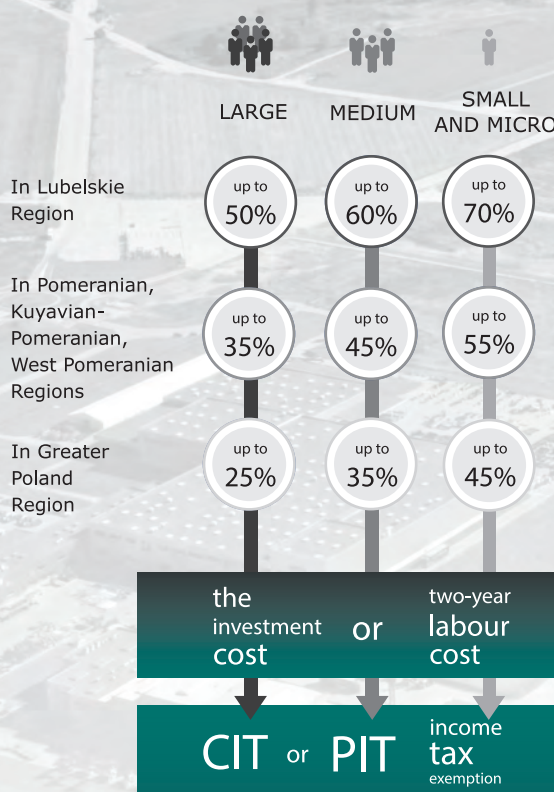
MINIMUM VALUE OF AN INVESTMENT

in a special economic zone is 100 000 EUR according to NBP exchange rate published on the day that the permit was granted.



PUBLIC AID – TAX EXEMPTIONS

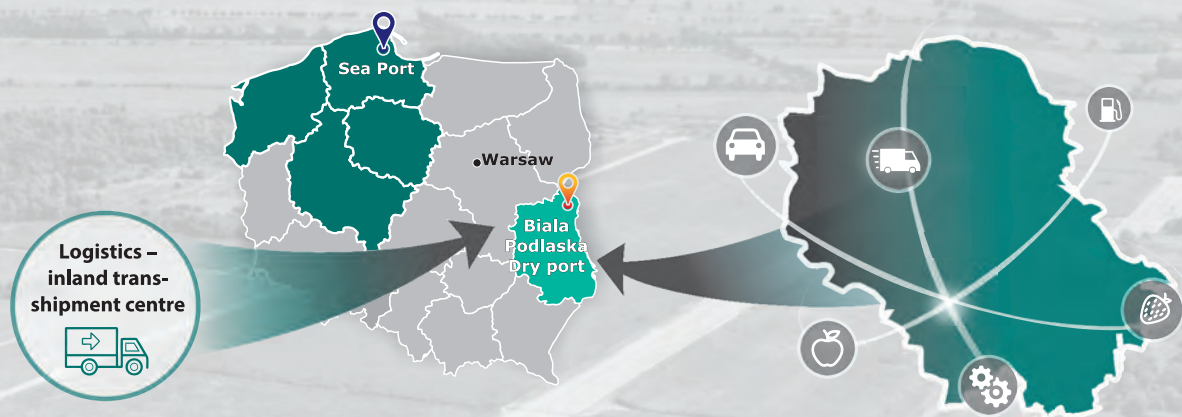
MAXIMUM AMOUNT OF AID is calculated basing on the value of planned investment or 2-year costs of newly hired employees. It depends on the size of an enterprise and the localization of the investment.



HOW TO OBTAIN A PERMIT IN THE ZONE?

The procedure regulating the acquisition of a permit to conduct business in the PSEZ has the form of a tender or negotiations depending on whether the investor would like to acquire a property or already has some land in the Zone.

BIALA PODLASKA IN THE POMERANIAN SPECIAL ECONOMIC ZONE



A new subzone called Biala Podlaska was created under the Regulation of the Council of Ministers of 30.12.2016, enlarging the PSEZ's operating area to the Lubelskie Region. It is in Biala Podlaska that PSEZ decided to carry out our project aimed to develop the eastern part of Poland. By using the infrastructure of the defunct military airport and by developing the existing inland transshipment centre in Malaszewicze, we intend to build a logistics centre, or a transshipment hub, integrated with the New Silk Route.



PSEZ IN BIALA PODLASKA

Investment area: 94.06 ha

- **24.73 ha** – area with complete utilities and partly developed
- **69.33 ha** – complementation of utilities in progress

It is located on the New Silk Route connecting China and Western Europe, in the vicinity of Europe's and Poland's largest logistics centres such as the inland transshipment facility in Malaszewicze.



WHY PSEZ?



35 subzones
in **5** regions



123 investors



PLN 11 billion
investment



20 thousand
workplaces



**Pomeranian Special Economic Zone Ltd.
(Pomorska Specjalna Strefa Ekonomiczna sp. z o.o.)**

9 Władysława IV Str., 81-703 Sopot, Poland

Phone: +48 58 555 97 10

E-mail: invest@psez.eu

www.strefa.gda.pl



**Municipality of Biała Podlaska
Town Development Department**

3 Marszałka Józefa Piłsudskiego 3 Str., 21-500 Biała Podlaska, Poland

Phone: +48 83 341 69 05

E-mail: invest@bialapodlaska.pl

www.invest.bialapodlaska.pl